



# Maximo 101

Michelle Cleary  
Oct 7, 2015



Unlocking potential.  
Achieving results.

# IBM Maximo 101 – What is Maximo?



IBM Maximo is an enterprise application software system utilized to manage Asset Maintenance, Repair and Overhaul activities for Asset intensive industries,





# What does that mean?

- That means that Maximo will track when, where and what Maintenance will be performed on any Asset or Location.
- Maximo will also track which parts where used and how many of each individual part are in Inventory.
- Maximo will also track Purchasing requests, Purchase Orders and Receiving of purchased items.



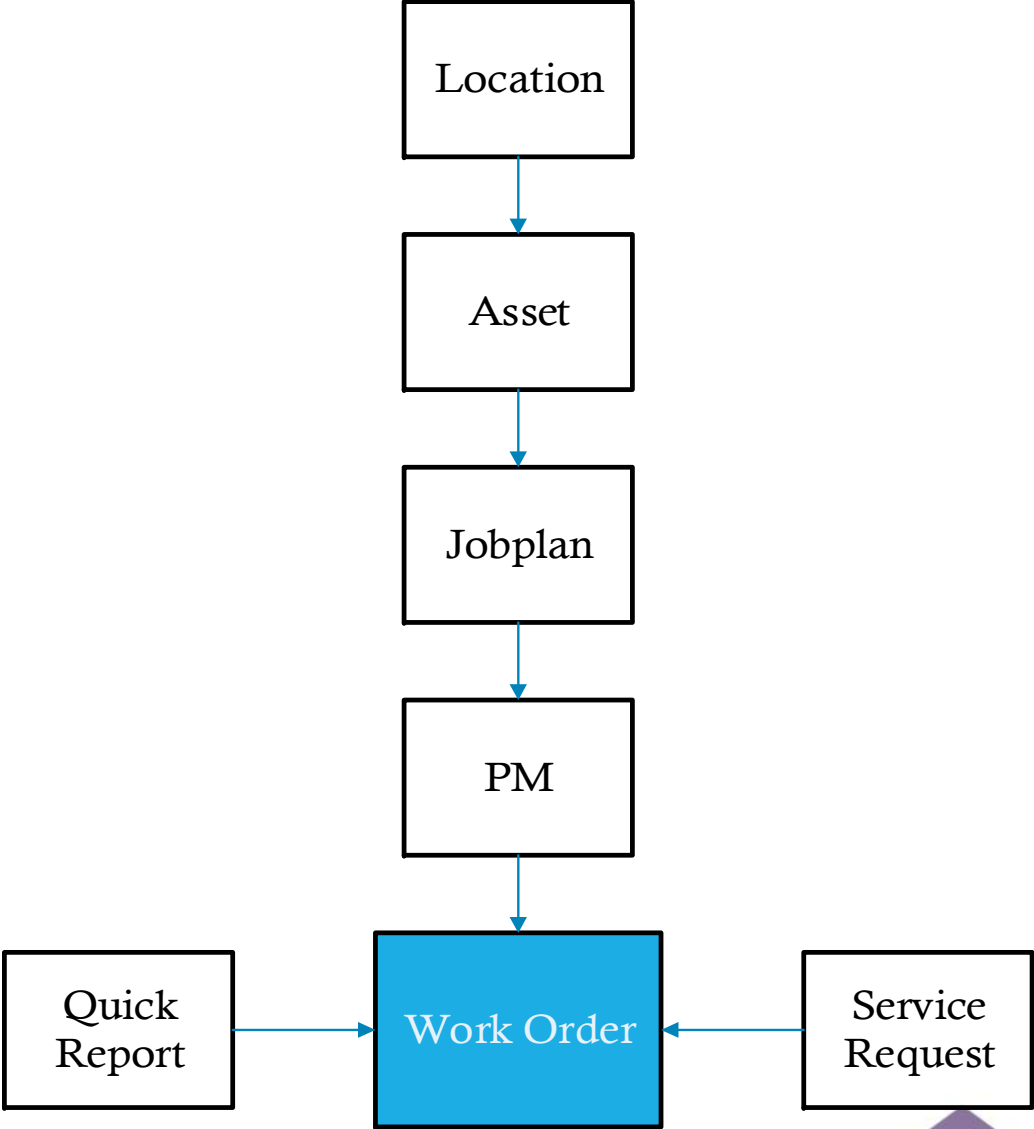


# Applications

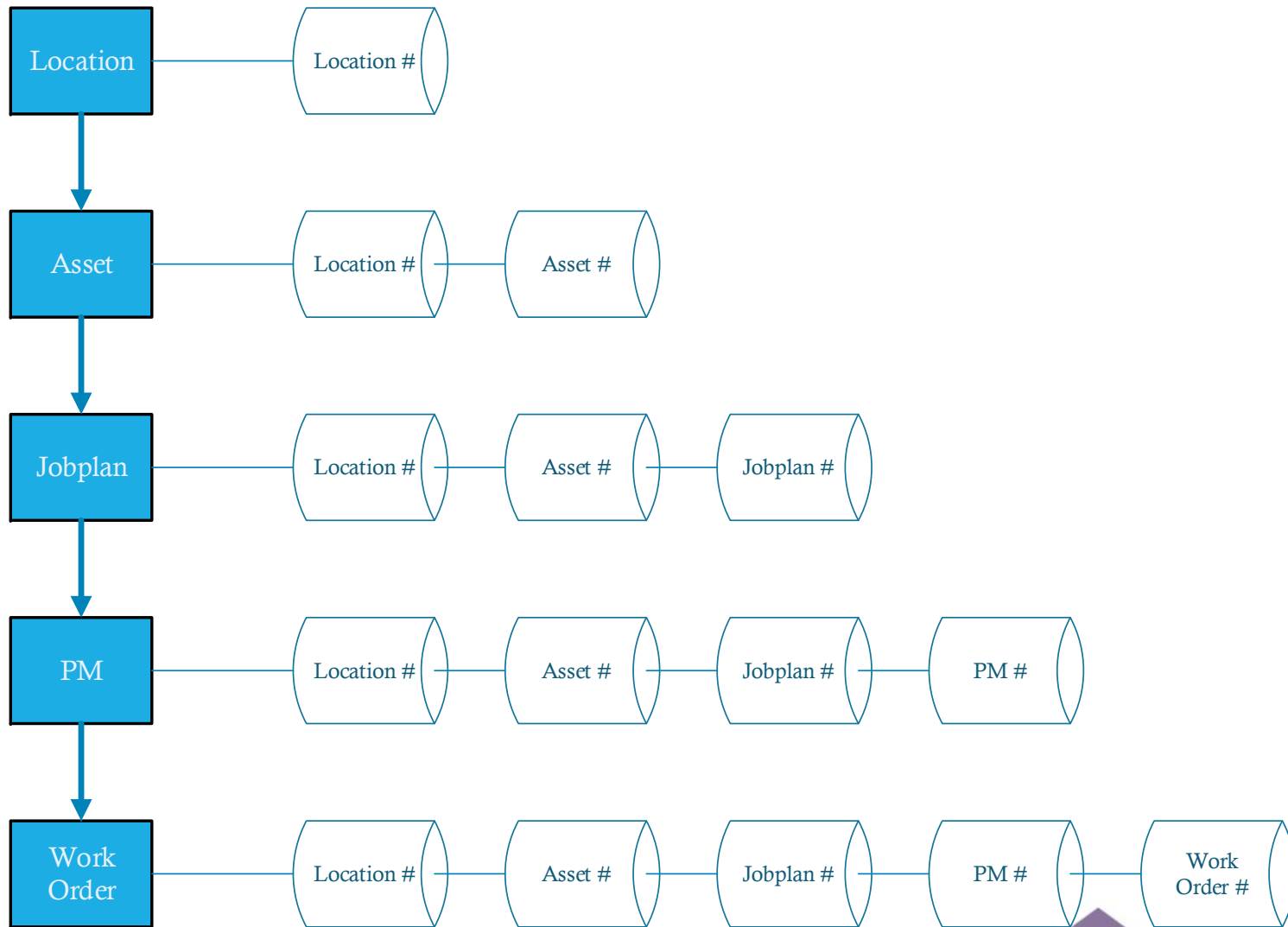
- Maximo in order to perform all of the different facets of the product has different applications.
- Each of the applications relates to another application.



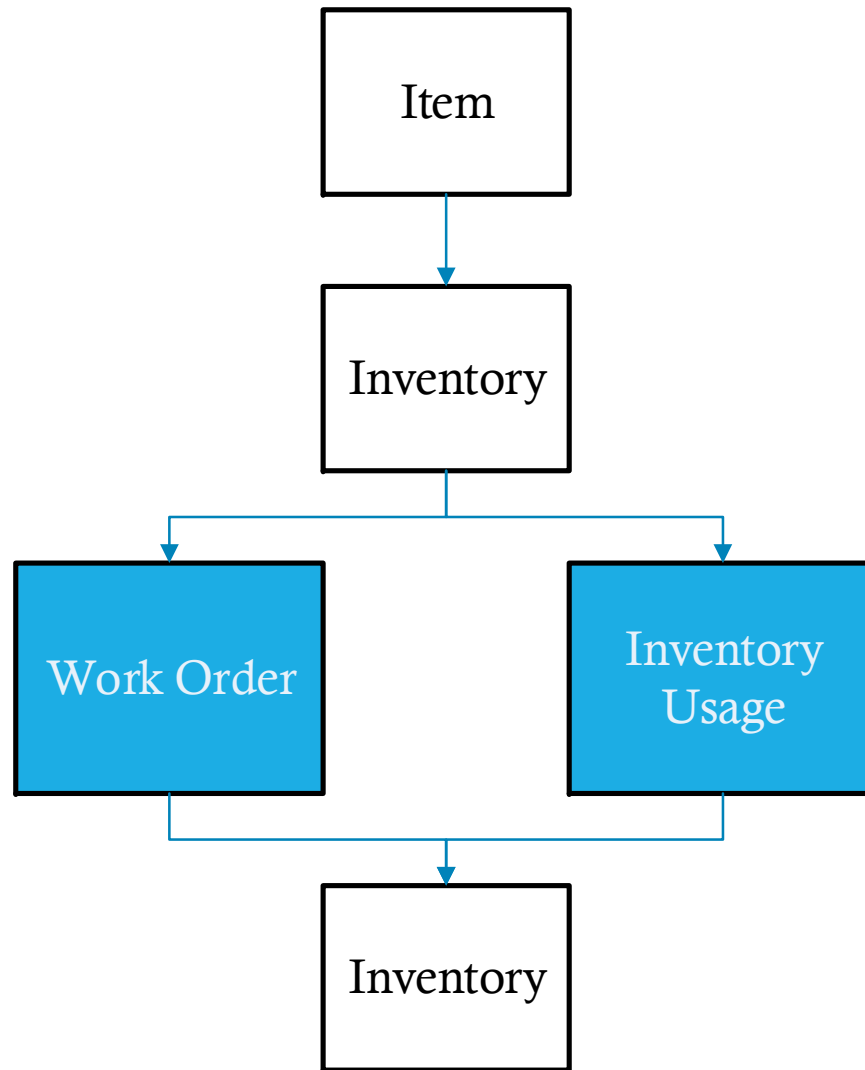
# Work Management



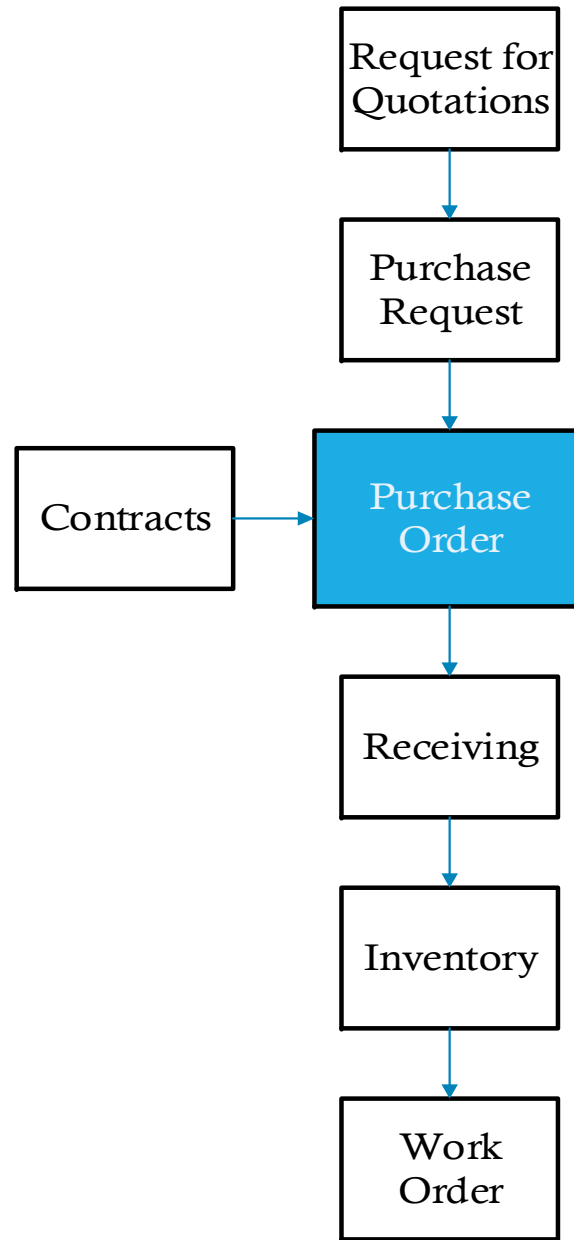
# Data Movement thru Work Management



# Inventory Management



# Purchasing







# Security? Workflow?

- Maximo has the ability to determine which applications, actions and data can be seen, modified or updated by a specific user group.
- Maximo has the ability to institute a Workflow to the different applications to match your business specific Workflow.



# Questions??

