



# IBM MxLoader – It's Much More Than a Free Data Loading Tool

Mike Levinson  
Senior Solutions Architect

Lloyd's Register Energy - Drilling



Working together  
for a safer world

# What is it?

## What is it:

- MxLoader is a free Microsoft® Excel® spreadsheet that allows you to quickly and easily query and load data into IBM Maximo, IBM SmartCloud Control Desk (SCCD) and other TPAE based applications.
- It brings together the power of the Maximo Integration Framework and the flexibility of Excel allowing to quickly manipulate and import data into any Maximo database.
- MxLoader runs on any Windows PC with a recent version of Office installed. No particular add-on or plug-ins are required.
- Developed by Bruno Portaluri (IBM)



# What Can it Do?

## What Can it Do:

- **Add** – Add records to database
- **AddChange** – Add or update existing records in the database
- **Change** – Update existing records in the database
- **Delete** – Delete records from the database
- **Replace** – Substitute existing records in the database

The MxLoader Utility uses the MIF and all of the standard MIF action properties and uses all of the standard mbo business logic that applies when entering records from the front end.

# What do I Need To Use It?

- **Maximo 7.1 or Higher**
- **Maximo Object Structures Application**
- **MxLoader Utility**
- **Microsoft Excel 2007/2010/2013**
- **Microsoft XML Core Services 6.0**

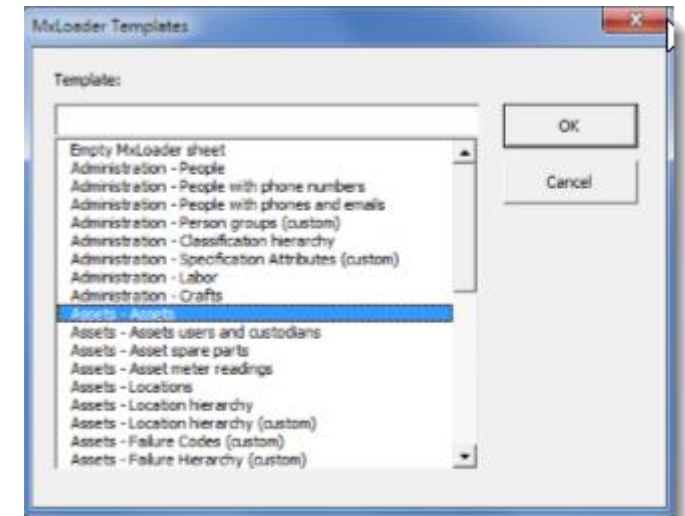
# Comes With Preconfigured Templates!!

## What Applications Can It Load OOB:

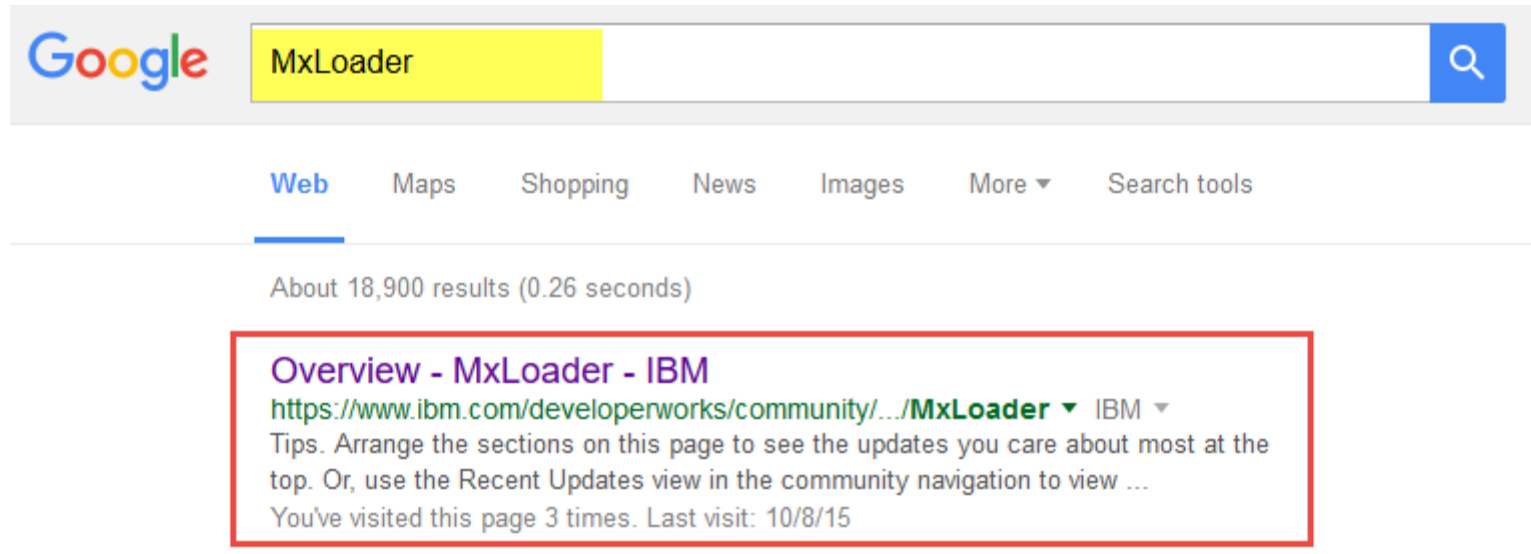
- Assets spare parts
- Commodities
- Companies
- Conversion factors
- Data dictionary
- Failure codes
- Failure hierarchy
- Job Plans
- Location hierarchy
- Person groups
- Preventive maintenance
- Routes
- Specification attributes
- Units of Measure

## What Objects Can It Load OOB:

- ASSET
- ASSETATTRIBUTE
- COMMODITIES
- COMPANIES
- CONVERSION
- FAILURECODE
- FAILURELIST
- JOBLABOR
- JOBMATERIAL
- JOBPLAN
- JOBTASK
- LOCATIONS
- LOCHIERARCHY
- MAXATTRIBUTE
- MEASUREUNIT
- PERSONGROUP
- PERSONGROUP
- PTEAM
- PM
- ROUTE\_STOP
- ROUTES
- SPAREPART



# Where Can I Get It?



**Be sure and download the MxLoader User Guide!!!**

# Questions Before the Demonstration?

